

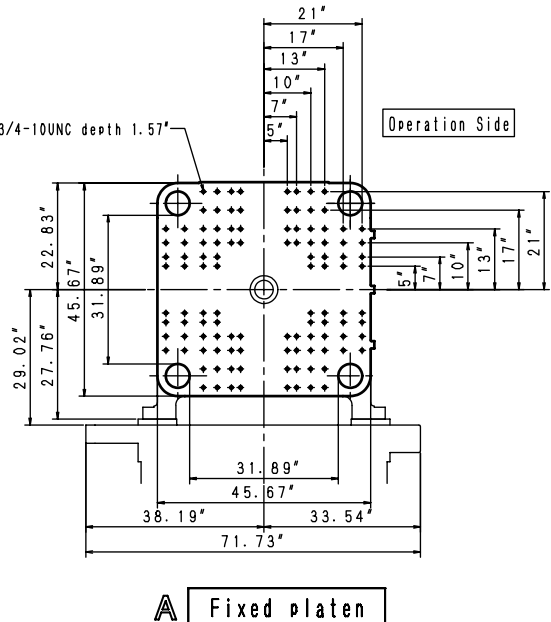
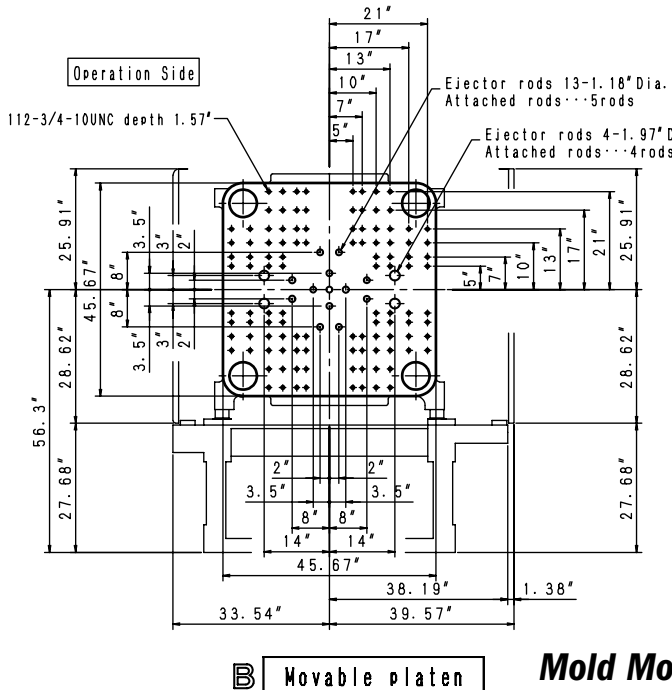
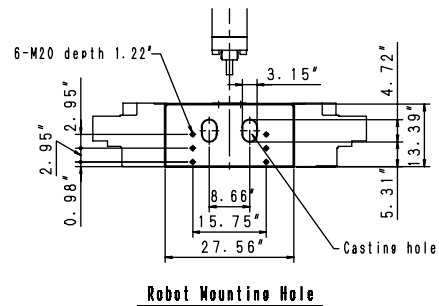
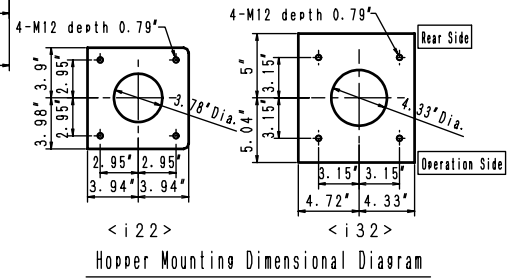
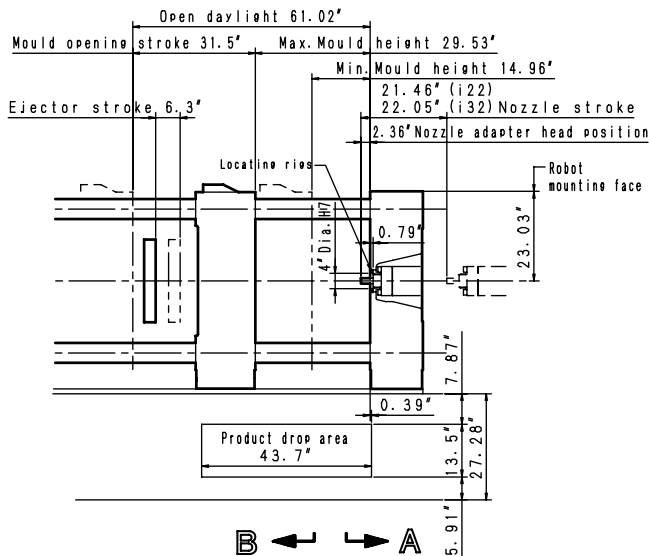
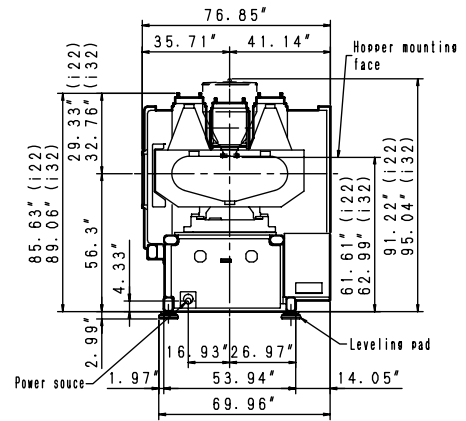
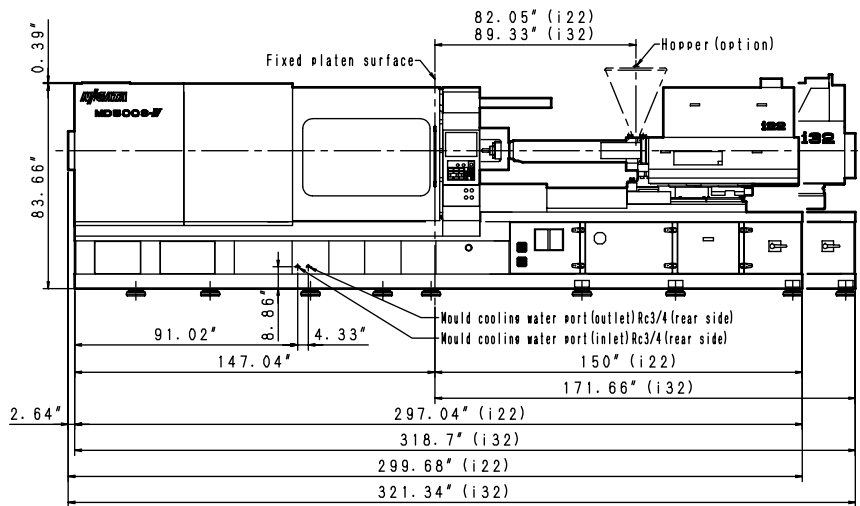
MD 500 S-IV

Specifications

Item		Unit	MD 500 S-IV	
Clamping Unit	Clamping System	–	Double Toggle	
	Clamping Force	kN (USt)	4500 (506)	
	Location Hole Diameter	(inch)	4	
	Tie-Bar Distance	mm (inch)	810 x 810 (31.89 x 31.89)	
	Platen Size	mm (inch)	1160 x 1160 (45.67 x 45.67)	
	Max. Mold Open Stroke	mm (inch)	800 (31.50)	
	Mold Height: Min. / Max.	mm (inch)	380 / 750 (14.96 / 29.53)	
	Daylight	mm (inch)	1550 (61.02)	
	Ejector Stroke	mm (inch)	160 (6.30)	
	Ejector Force	kN (USt)	100 (11.24)	
Injection Unit	Injection Unit	T•m	i 32	
	Screw Type	–	A	B
	Screw Diameter	mm (inch)	76 (2.99)	82 (3.23)
	Screw Stroke	mm (inch)	350 (13.78)	
	Theoretical Shot Volume	cm ³ (cu.in)	1588 (96.91)	1848 (112.77)
	Shot Mass	g (oz)	1460 (51.50)	1699 (59.93)
	Max. Injection Pressure	MPa (PSI)	200 (29010)	170 (24660)
	Max. Holding Pressure	MPa (PSI)	180 (26110)	155 (22480)
	Max. Injection Speed	mm/s (inch/s)	160 (6.30)	
	Injection Rate	cm ³ /s (cu.in/s)	726 (44.30)	845 (51.56)
	Screw Speed	min ⁻¹	200	
	Plasticizing Capacity	kg/h (oz/s)	256 (2.51)	299 (2.93)
	Nozzle Stroke	mm (inch)	560 (22.05)	
	Nozzle Touch Force	TONS	2.2	
	Automatic Temperature Control Zone	–	1G + 4	
	Heater Capacity	kW	33.16	
Others	Machine kVA	kVA	159	
	Machine Mass	t (USt)	25.6 (28.2)	
	Machine Size	L	m (inch)	8.2 (321.3)
		W	m (inch)	2.0 (76.57)
		H	m (inch)	2.3 (89.06)
	Hopper Capacity	L (gal.)	120 (31.70)	

Notes: * "Y" size screws are optional.

External Dimension Diagram



Mold Mounting Dimensional Diagram