

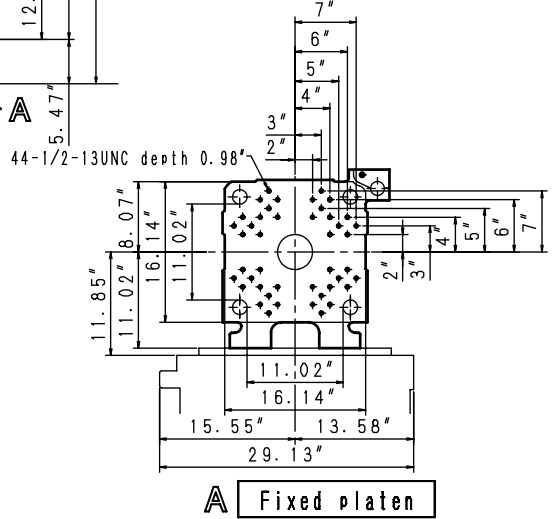
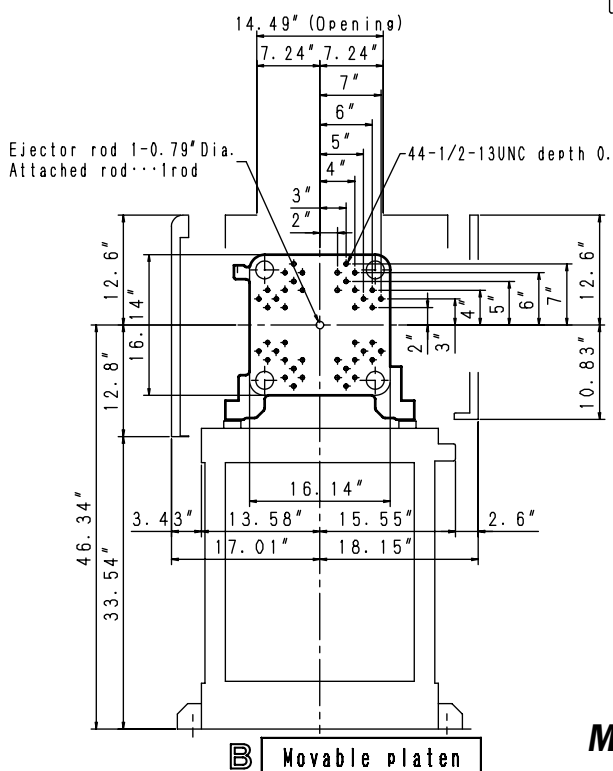
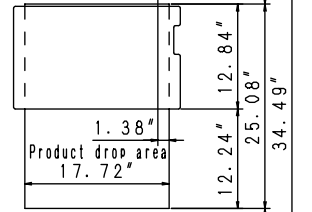
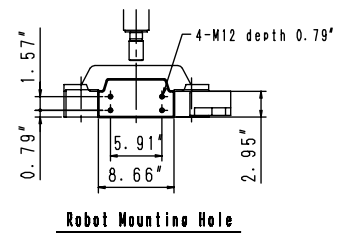
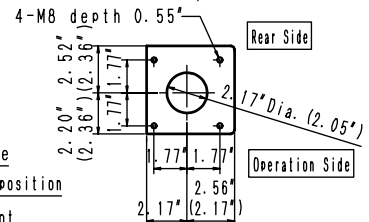
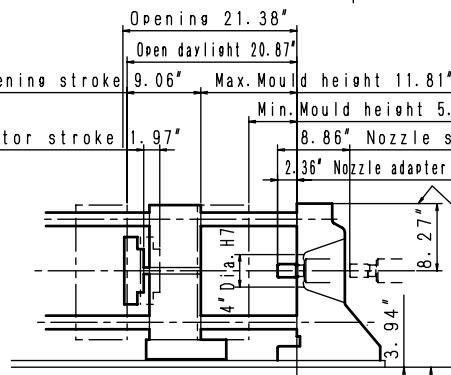
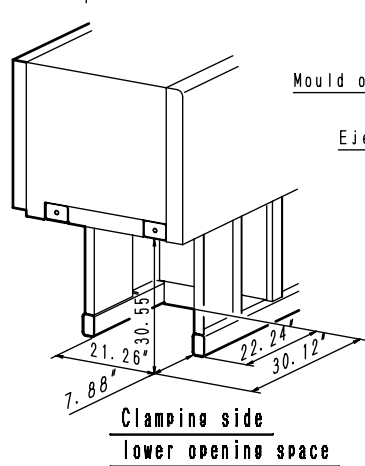
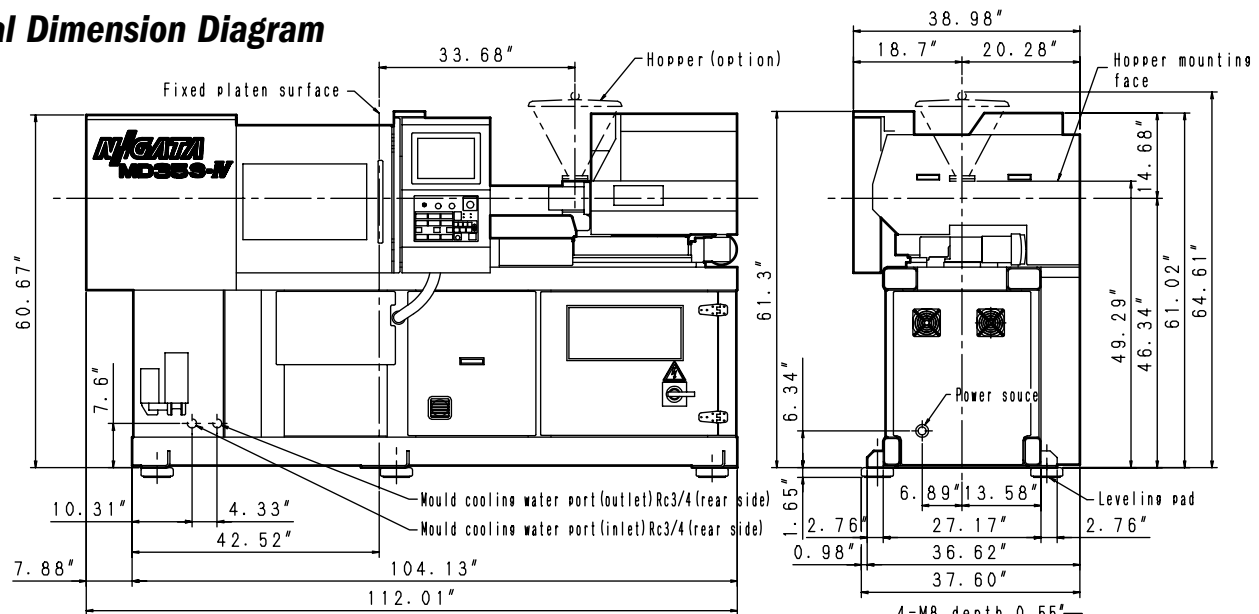
MD 35 S-IV

Specifications

Item		Unit	MD 35 S-IV		
Clamping Unit	Clamping System	–	Double Toggle		
	Clamping Force	kN (USt)	300 (34)		
	Location Hole Diameter	(inch)	4		
	Tie-Bar Distance	mm (inch)	280 x 280 (11.02 x 11.02)		
	Platen Size	mm (inch)	410 x 410 (16.14 x 16.14)		
	Max. Mold Open Stroke	mm (inch)	230 (9.06)		
	Mold Height: Min. / Max.	mm (inch)	150 / 300 (5.91 / 11.81)		
	Daylight	mm (inch)	530 (20.87)		
	Ejector Stroke	mm (inch)	50 (1.97)		
	Ejector Force	kN (USt)	15 (1.7)		
Injection Unit	Injection Unit	T•m	i 0.7		
	Screw Type	–	Y	A	B
	Screw Diameter	mm (inch)	*18 (0.71)	22 (0.87)	25 (0.98)
	Screw Stroke	mm (inch)	85 (3.35)		
	Theoretical Shot Volume	cm ³ (cu.in)	22 (1.34)	32 (1.95)	42 (2.56)
	Shot Mass	g (oz)	20 (0.71)	30 (1.06)	38 (1.34)
	Max. Injection Pressure	MPa (PSI)	280 (40610)	200 (29010)	155 (22480)
	Max. Holding Pressure	MPa (PSI)	270 (39160)	180 (26110)	140 (20310)
	Max. Injection Speed	mm/s (inch/s)	300 (11.81)		
	Injection Rate	cm ³ /s (cu.in/s)	76 (4.64)	114 (6.96)	147 (8.97)
	Screw Speed	min ⁻¹	400		
	Plasticizing Capacity	kg/h (oz/s)	10 (0.10)	20 (0.20)	30 (0.29)
	Nozzle Stroke	mm (inch)	225 (8.86)		
	Nozzle Touch Force	TONS	1.69		
	Automatic Temperature Control Zone	–	1G + 3		
Heater Capacity	kW	2.99	3.50	4.19	
Others	Machine kVA	kVA	15		
	Machine Mass	t (USt)	2 (2.2)		
	Machine Size	L	m (inch) 2.85 (112.0)		
		W	m (inch) 0.99 (38.98)		
		H	m (inch) 1.56 (61.30)		
	Hopper Capacity	L (gal.)	15 (3.96)		

Notes: * "Y" size screws are optional.

External Dimension Diagram



Mold Mounting Dimensional Diagram