

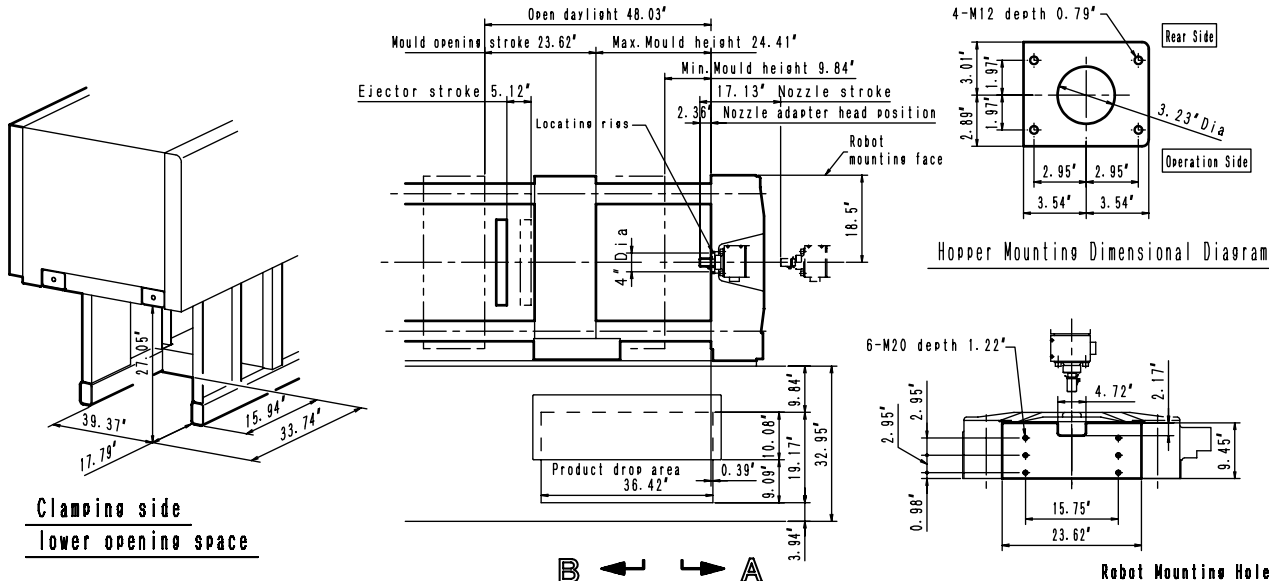
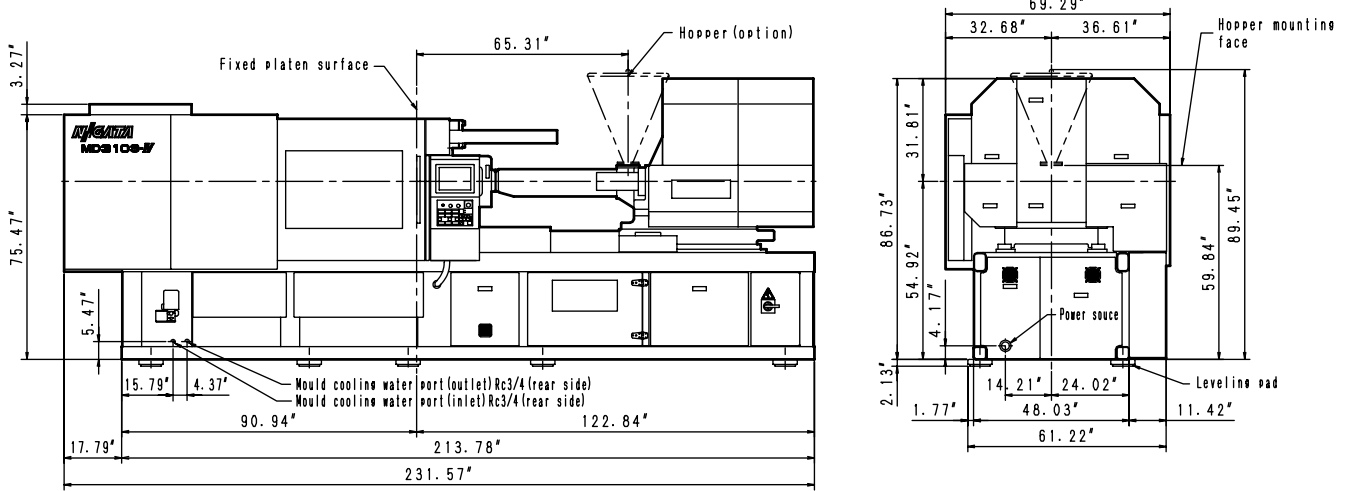
MD 310 S-IV

Specifications

Item		Unit	MD 310 S-IV		
Clamping Unit	Clamping System	–	Double Toggle		
	Clamping Force	kN (USt)	2800 (315)		
	Location Hole Diameter	(inch)	4		
	Tie-Bar Distance	mm (inch)	630 x 630 (24.80 x 24.80)		
	Platen Size	mm (inch)	930 x 930 (36.61 x 36.61)		
	Max. Mold Open Stroke	mm (inch)	600 (23.62)		
	Mold Height: Min. / Max.	mm (inch)	250 / 620 (9.84 / 24.41)		
	Daylight	mm (inch)	1220 (48.03)		
	Ejector Stroke	mm (inch)	130 (5.12)		
	Ejector Force	kN (USt)	60 (6.74)		
Injection Unit	Injection Unit	T•m	i 11		
	Screw Type	–	A	B	
	Screw Diameter	mm (inch)	52 (2.05)	60 (2.36)	
	Screw Stroke	mm (inch)	260 (10.24)		
	Theoretical Shot Volume	cm ³ (cu.in)	552 (33.69)	735 (44.85)	
	Shot Mass	g (oz)	508 (17.92)	676 (23.81)	
	Max. Injection Pressure	MPa (PSI)	200 (29010)	150 (21760)	
	Max. Holding Pressure	MPa (PSI)	180 (26110)	135 (19580)	
	Max. Injection Speed	mm/s (inch/s)	300 (11.81)		
	Injection Rate	cm ³ /s (cu.in/s)	637 (38.87)	848 (51.75)	
	Screw Speed	min ⁻¹	300		
	Plasticizing Capacity	kg/h (oz/s)	151 (1.48)	206 (2.02)	
	Nozzle Stroke	mm (inch)	435 (17.13)		
	Nozzle Touch Force	TONS	5.28		
	Automatic Temperature Control Zone	–	1G + 3		
	Heater Capacity	kW	18.69		
Others	Machine kVA	kVA	87		
	Machine Mass	t (USt)	13.3 (14.6)		
	Machine Size	L	m (inch)	5.9 (231.6)	
		W	m (inch)	1.8 (69.29)	
		H	m (inch)	2.2 (86.73)	
	Hopper Capacity	L (gal.)	80 (21.13)		

Notes: * "Y" size screws are optional.

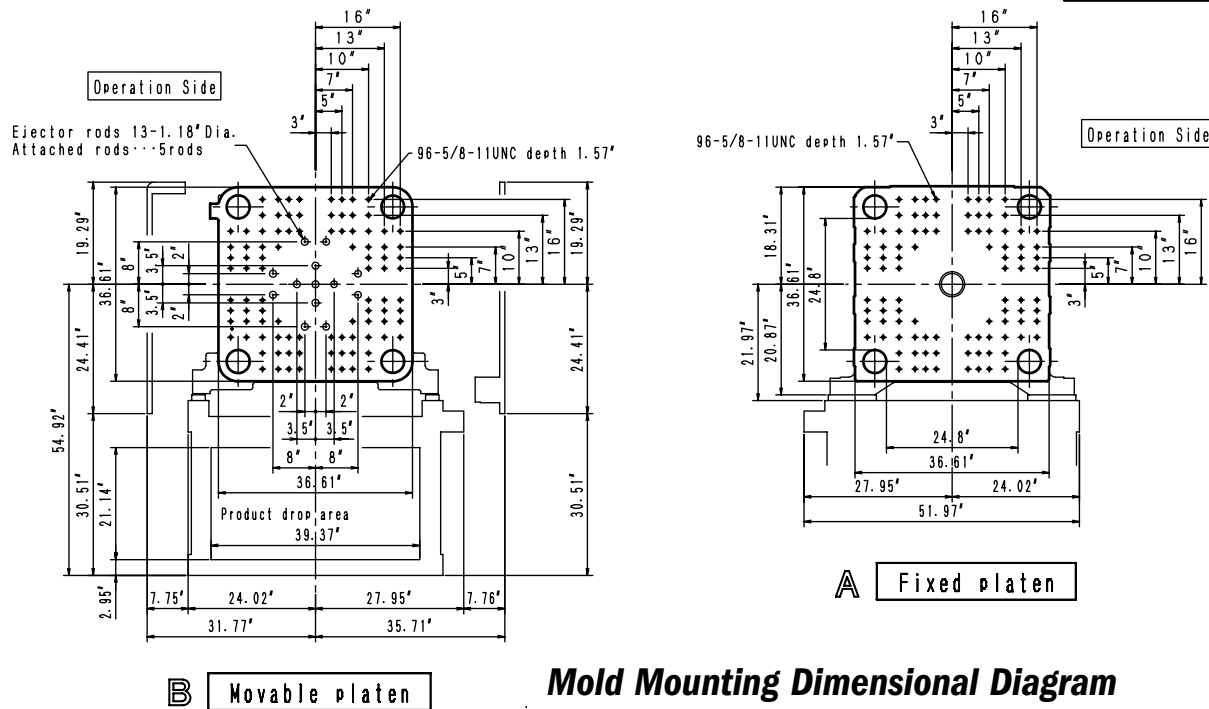
External Dimension Diagram



Clamping side
lower opening space

Hopper Mounting Dimensional Diagram

Robot Mounting Hole



B Movable platen

A Fixed platen

Mold Mounting Dimensional Diagram