

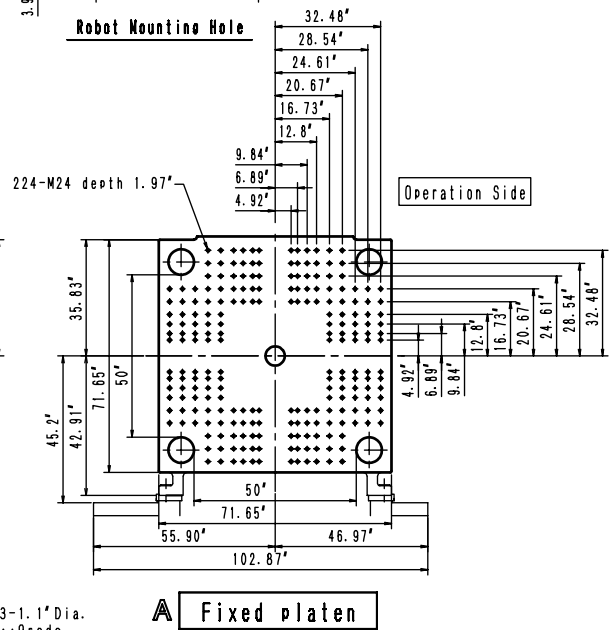
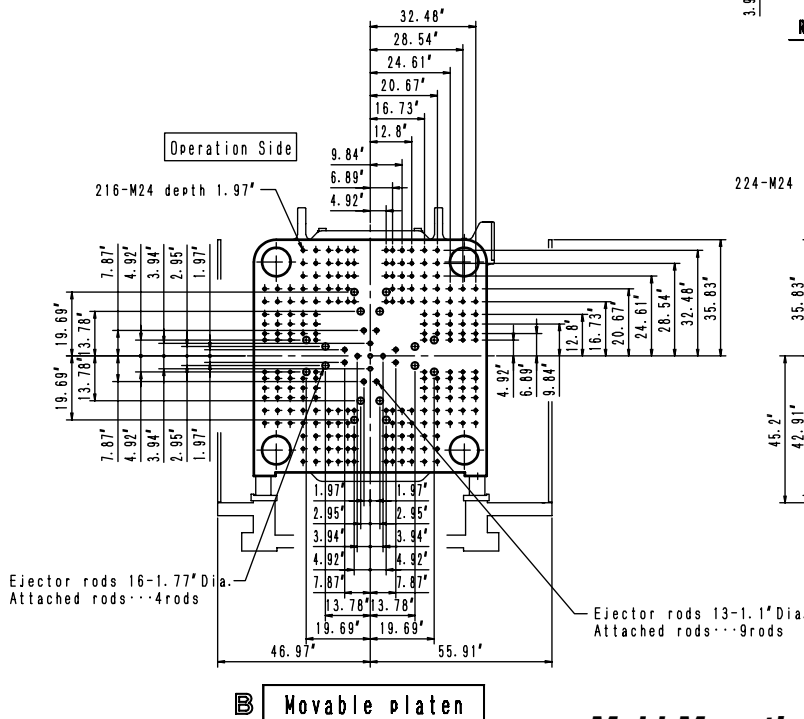
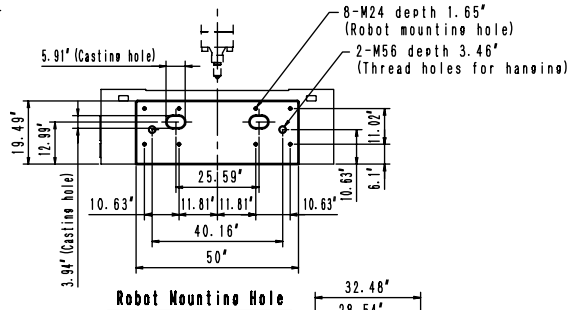
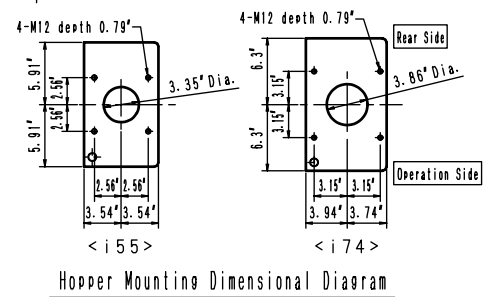
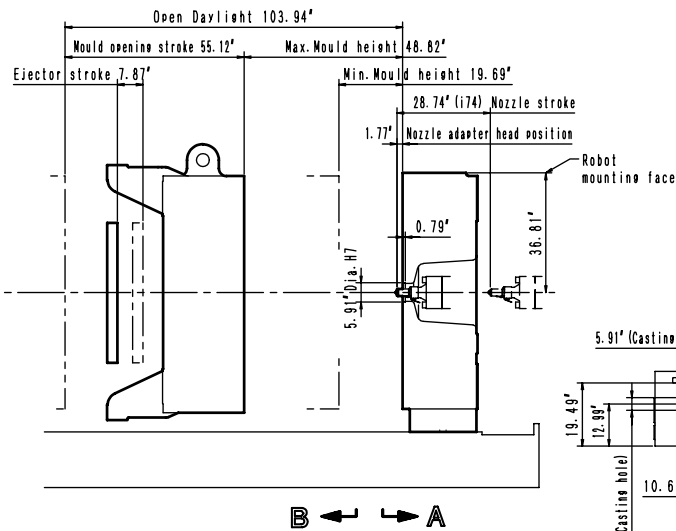
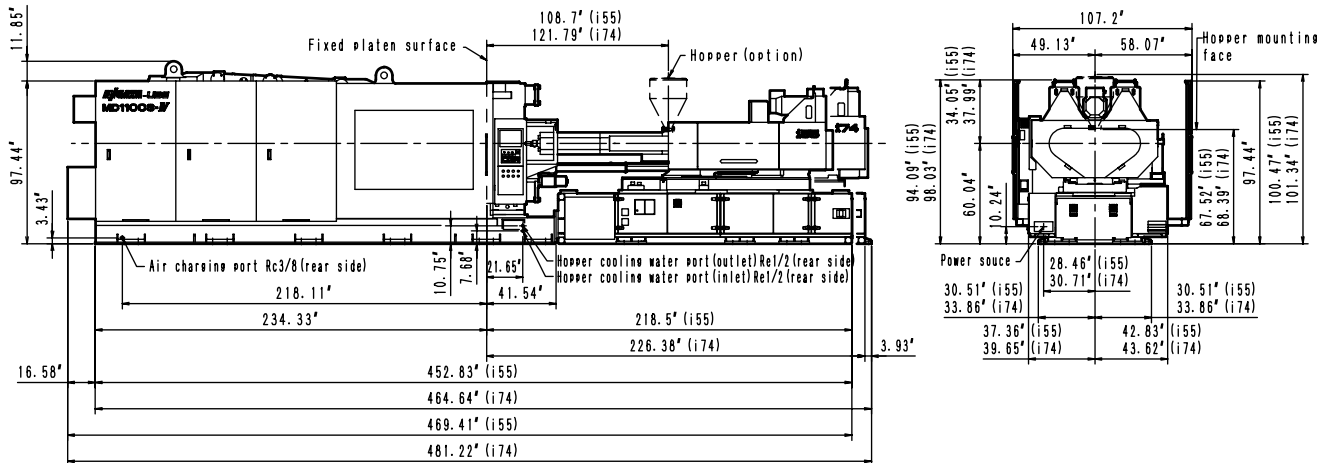
# MD 1100 S-IV

## Specifications

Item		Unit	MD 1100 S-IV	
Clamping Unit	Clamping System		Double Toggle	
	Clamping Force		9800 (1102)	
	Location Hole Diameter		5	
	Tie-Bar Distance		1270 x 1270 (50.0 x 50.0)	
	Platen Size		1820 x 1820 (71.65 x 71.65)	
	Max. Mold Open Stroke		1400 (55.12)	
	Mold Height: Min. / Max.		500 / 1240 (19.69 / 48.82)	
	Daylight		2640 (103.94)	
	Ejector Stroke		200 (7.87)	
	Ejector Force		245 (27.54)	
Injection Unit	Injection Unit		T•m i 74	
	Screw Type		A B	
	Screw Diameter		100 (3.94) 112 (4.41)	
	Screw Stroke		500 (19.69)	
	Theoretical Shot Volume		3927 (239.64) 4926 (300.60)	
	Shot Mass		3613 (127.44) 4532 (159.86)	
	Max. Injection Pressure		185 (26830) 150 (21760)	
	Max. Holding Pressure		170 (24660) 135 (19580)	
	Max. Injection Speed		150 (5.91)	
	Injection Rate		1178 (71.89) 1478 (90.19)	
	Screw Speed		120	
	Plasticizing Capacity		430 (4.21) 450 (4.41)	
	Nozzle Stroke		730 (28.74)	
	Nozzle Touch Force		4.4	
	Automatic Temperature Control Zone		1G + 5	
	Heater Capacity		51.25	
Others	Machine kVA		240	
	Machine Mass		61 (67.1)	
	Machine Size	L	12.3 (482.4)	
		W	2.7 (107.2)	
		H	2.5 (98.0)	
	Hopper Capacity		120 (31.70)	

Notes: \* "Y" size screws are optional.

## External Dimension Diagram



## Mold Mounting Dimensional Diagram