

# Specifications (MD55S6000)

Item		Unit	MD55S6000			
CLAMPING UNIT	CLAMPING SYSTEM		-	double toggle		
	CLAMPING FORCE		kN	500		
			US ton	56		
	TIE BARS DISTANCE (H×V)		mm	360×320		
			in	14.17×12.60		
	PLATEN SIZE (H×V)		mm	470×470		
			in	18.50×18.50		
	MOLD OPENING STROKE		mm	250		
			in	9.84		
MOLD HEIGHT (MIN./MAX.)		mm	160/370			
		in	6.30/14.57			
OPEN DAYLIGHT		mm	620			
		in	24.41			
EJECTOR STROKE		mm	70			
		in	2.76			
EJECTOR FORCE		kN	22			
		US ton	2.47			
INJECTION UNIT	INJECTION . CAPACITY *1		T·m	11.0		
	SCREW COMPLETE	SCREW TYPE	-	Y(Op.)	A	B
		SCREW DIAMETER	mm	18	25	30
			in	0.71	0.98	1.18
	SCREW STROKE		mm	85	100	120
			in	3.35	3.94	4.72
	Standard Specification	CAL . INJ . CAPACITY *2	cm <sup>3</sup>	22	49	85
			cu-in	1.34	2.99	5.19
		SHOT MASS (PS) *3	g	20	45	78
			oz	0.71	1.59	2.75
		MAX. INJ . PRESSURE *4	MPa	280	200	140
			psi	40610	29010	20310
		MAX. HOLD PRESSURE *4	MPa	280	180	125
	psi		40610	26110	18130	
	MAX. INJ. SPEED *5	mm/s		350		
		in/s		13.78		
	INJECTION RATE	cm <sup>3</sup> /s	89	172	247	
		cu-in/s	5.43	10.50	15.07	
	LP Specification (OP.)	CAL . INJ . CAPACITY *2	cm <sup>3</sup>	22	49	85
			cu-in	1.34	2.99	5.19
		SHOT MASS (PS) *3	g	20	45	78
			oz	0.71	1.59	2.75
		MAX. INJ . PRESSURE *4	MPa	280	200	140
			psi	40610	29010	20310
MAX. HOLD. PRESSURE *4		MPa	280	180	125	
	psi	40610	26110	18130		
MAX. INJ. SPEED *5	mm/s		230			
	in/s		9.06			
INJECTION RATE	cm <sup>3</sup> /s	59	113	163		
	cu-in/s	3.60	6.90	9.95		
SCREW SPEED		min <sup>-1</sup>	360			
PLASTICIZING CAPACITY (PS) *6		kg/h	9	27	43	
		oz/s	0.09	0.26	0.42	
NOZZLE STROKE		mm	325			
		in	12.80			
NOZZLE TOUCH FORCE		kN	20			
		US ton	2.25			
TEMP. ZONES	NOZZLE·BARREL	-	1G+4			
	HOPPER BASE	-	1			
HEATER CAPACITY		kW	2.8	5.0	8.0	
TOTAL MACHINE POWER *7		kVA	14			
POWER SOURCE (VOLTAGE×FREQUENCY)		-	3 phase AC200V(±10%)×50Hz/60Hz 3 phase AC220V(±10%)×60Hz			
CABLE SIZE *8		mm <sup>2</sup> (A.W.G)	8 8			
MACHINE MASS		ton	3.6			
		US-ton	4.0			
MACHINE SIZE	LENGTH	m	3.35	3.35	3.45	
		in	131.97	131.97	135.83	
	WIDTH	m		1.06		
		in		41.77		
HEIGHT	m		1.54			
	in		60.51			
MAX COOLING WATER CONSUMPTION *9		L/min gal/min	5 1.32			

Note: The make of this "op." shows optional specification. Specifications are subject to change without notice.

\*1: Injection capacity = (Injection pressure) × (Calculated injection volume)

\*2: "Calculated injection Volume" = (Screw cross section) × (Screw stroke)

\*3: "Shot mass (PS)" is assumed to be 92% of "Calculated injection Volume"

\*4: Max. Injection pressure and Max. Hold. pressure may be limited by cycle time.

\*5: "Max. Injection speed" may not reach this value, depending on the status of load.

\*6: "Plasticizing capacity" is assumed by polystyrene.

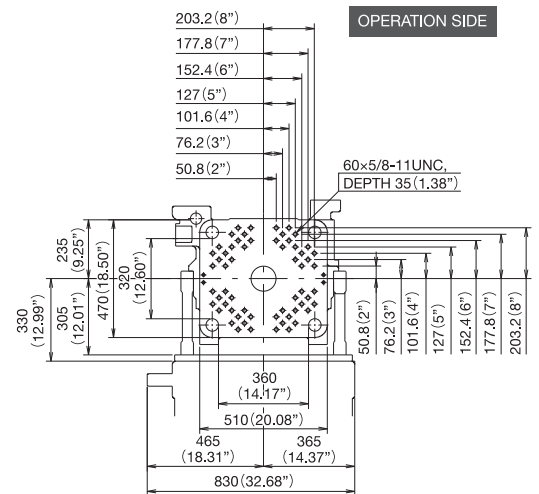
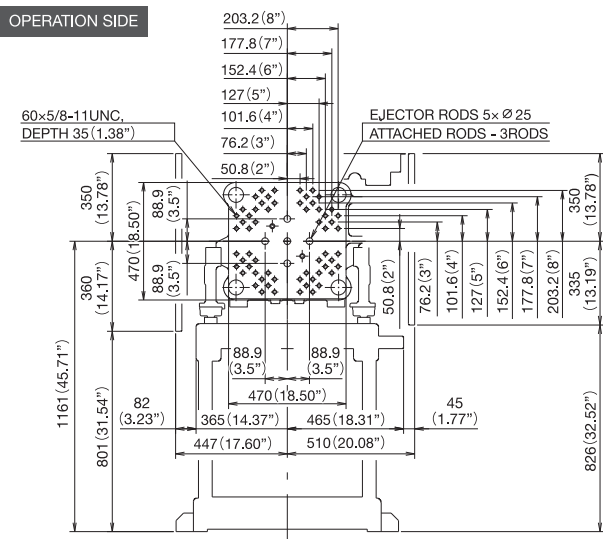
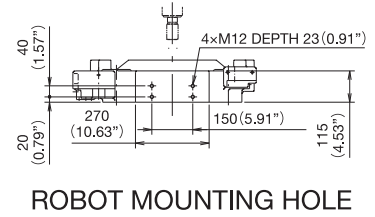
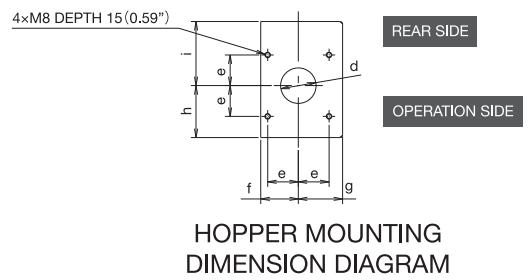
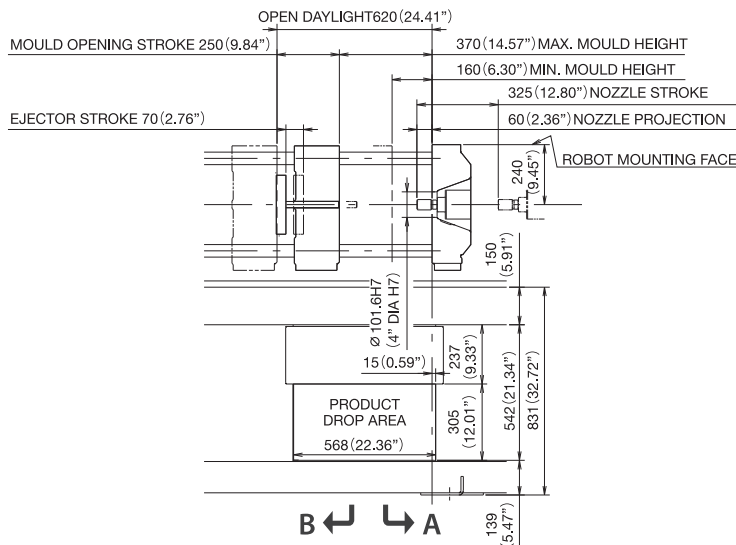
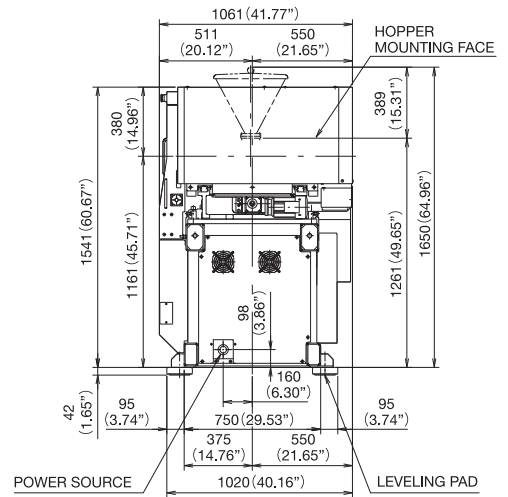
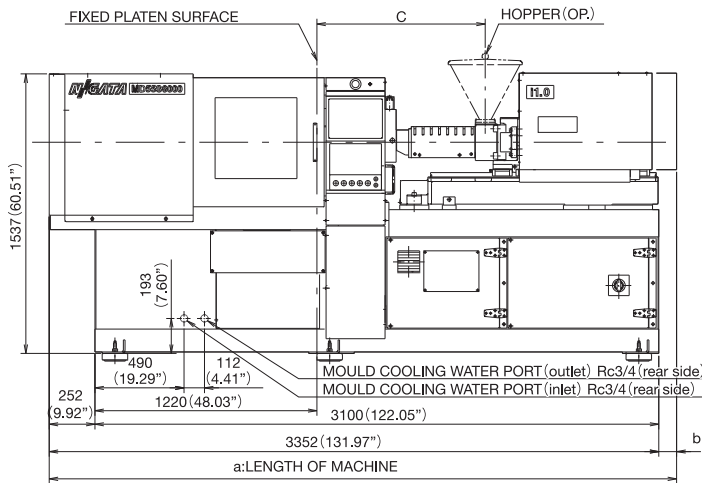
\*7: Shows the capacity of machine : When branching the power supply of auxiliary device from molding machine, increase the capacity by that value.

\*8: It is necessary to reflect the current derating (correcting) factor when multi conductor or so is used.

\*9: Used to cool the hopper base : Set the water pressure less than 0.5Mpa (72.5 psi) .

# External Dimension Diagram (MD55S6000)

		Machine size table MODEL									mm (inch <sup>3</sup> )	
INJ. Capacity	Type	Diameter	a	b	c	d	e	f	g	h	i	
i1.0	Y	∅18 (0.71")	3352 (131.97")	0 (0")	769 (30.28")	∅52 (2.05")	45 (1.77")	55 (2.17")	65 (2.56")	70 (2.76")	70 (2.76")	
	A	∅25 (0.98")	3352 (131.97")	0 (0")	926 (36.46")	∅52 (2.05")	45 (1.77")	55 (2.17")	65 (2.56")	76 (2.99")	94 (3.70")	
	B	∅30 (1.18")	3450 (135.83")	98 (3.86")	1076 (42.36")	∅58 (2.28")	50 (1.97")	60 (2.36")	60 (2.36")	74 (2.91")	96 (3.78")	



B MOVABLE PLATEN MOULD MOUNTING DIMENSION DIAGRAM A FIXED PLATEN