

# Specifications (MD110S6000・MD150S6000)

Item		Unit	MD110S6000			MD150S6000			
CLAMPING UNIT	CLAMPING SYSTEM	-	double toggle			ダブルトグル (double toggle)			
	CLAMPING FORCE	kN	1000			1300			
		US ton	112			146			
	TIE BARS DISTANCE (H×V)	mm	460×410			510×460			
		in	18.11×16.14			20.08×18.11			
	PLATEN SIZE (H×V)	mm	610×610			670×670			
		in	24.02×24.02			26.38×26.38			
	MOLD OPENING STROKE	mm	350			380			
		in	13.78			14.96			
	MOLD HEIGHT (MIN./MAX.)	mm	200/450			200/450			
in		7.87/17.72			7.87/17.72				
OPEN DAYLIGHT	mm	800			830				
	in	31.50			32.68				
EJECTOR STROKE	mm	100			100				
	in	3.94			3.94				
EJECTOR FORCE	kN	32			32				
	US ton	3.60			3.60				
INJECTION . CAPACITY	*1	T·m	12.7			14.0			
SCREW COMPLETE	SCREW TYPE	-	Y	A	B	Y	A	B	
	SCREW DIAMETER	mm	30	35	40	35	40	45	
SCREW STROKE		mm	120	140	160	140	160	180	
		in	4.72	5.51	6.30	5.51	6.30	7.09	
Standard Specification	CAL . INJ . CAPACITY	*2	cm <sup>3</sup>	85	135	201	135	201	286
		cu-in	5.19	8.24	12.27	8.24	12.27	17.45	
	SHOT MASS (PS)	*3	g	78	124	185	124	185	263
		oz	2.75	4.37	6.53	4.37	6.53	9.28	
	MAX. INJ . PRESSURE	*4	MPa	270	200	155	260	200	155
		psi	39160	29010	22480	37710	29010	22480	
	MAX. HOLD PRESSURE	*4	MPa	245	180	135	235	180	140
		psi	35530	26110	19580	34080	26110	20310	
	MAX. INJ. SPEED	*5	mm/s	300			300		
		in/s	11.81			11.81			
INJECTION RATE	cm <sup>3</sup> /s	212	289	377	289	377	477		
	cu-in/s	12.94	17.64	23.01	17.64	23.01	29.11		
LP Specification (OP.)	CAL . INJ . CAPACITY	*2	cm <sup>3</sup>	85	135	201	135	201	286
		cu-in	5.19	8.24	12.27	8.24	12.27	17.45	
	SHOT MASS (PS)	*3	g	78	124	185	124	185	263
		oz	2.75	4.37	6.53	4.37	6.53	9.28	
	MAX. INJ . PRESSURE	*4	MPa	270	200	155	260	200	155
		psi	39160	29010	22480	37710	29010	22480	
	MAX. HOLD. PRESSURE	*4	MPa	245	180	135	235	180	140
		psi	35530	26110	19580	34080	26110	20310	
	MAX. INJ. SPEED	*5	mm/s	230			200		
		in/s	9.06			7.87			
INJECTION RATE	cm <sup>3</sup> /s	163	221	289	192	251	318		
	cu-in/s	9.95	13.49	17.64	11.72	15.32	19.41		
SCREW SPEED		min <sup>-1</sup>	360			360			
PLASTICIZING CAPACITY (PS)	*6	kg/h	43	60	93	60	93	115	
	oz/s	0.42	0.59	0.91	0.59	0.91	1.13		
NOZZLE STROKE		mm	370			370			
NOZZLE TOUCH FORCE		kN	20			20			
		US ton	2.25			2.25			
TEMP. ZONES	NOZZLE・BARREL	-	1G+4			1G+4			
	HOPPER BASE	-	1			1			
HEATER CAPACITY		kW	8.0	10.7	12.1	10.7	12.1	14.1	
TOTAL MACHINE POWER	*7	kVA	29			29			
POWER SOURCE (VOLTAGE×FREQUENCY)		-	3 phase AC200V(±10%)×50Hz/60Hz 3 phase AC220V(±10%)×60Hz			3 phase AC200V(±10%)×50Hz/60Hz 3 phase AC220V(±10%)×60Hz			
CABLE SIZE	*8	mm <sup>2</sup>	22			22			
		(A.W.G)	4			4			
MACHINE MASS		ton	4.7			6.2			
		US-ton	5.2			6.8			
MACHINE SIZE	LENGTH	m	4.17	4.17	4.29	4.42	4.42	4.54	
		in	164.25	164.25	168.82	174.06	174.06	178.82	
	WIDTH	m	1.20			1.24			
		in	47.17			48.70			
	HEIGHT	m	1.62			1.69			
		in	63.58			66.54			
MAX COOLING WATER CONSUMPTION	*9	L/min	5			7.5			
		gal/min	1.32			1.98			

Note:The make of this "op." shows optional specification. Specifications are subject to change without notice.

\*1:Injection capacity = (Injection pressure) × (Calculated injection volume)

\*2:"Calculated injection Volume" = (Screw cross section) × (Screw stroke)

\*3:"Shot mass (PS) is assumed to be 92% of "Calculated injection Volume"

\*4:Max. Injection pressure and Max. Hold. pressure may be limited by cycle time.

\*5:"Max. Injection speed" may not reach this value, depending on the status of load.

\*6:"Plasticizing capacity" is assumed by polystyrene.

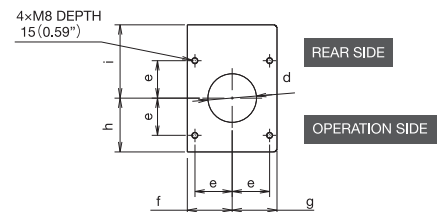
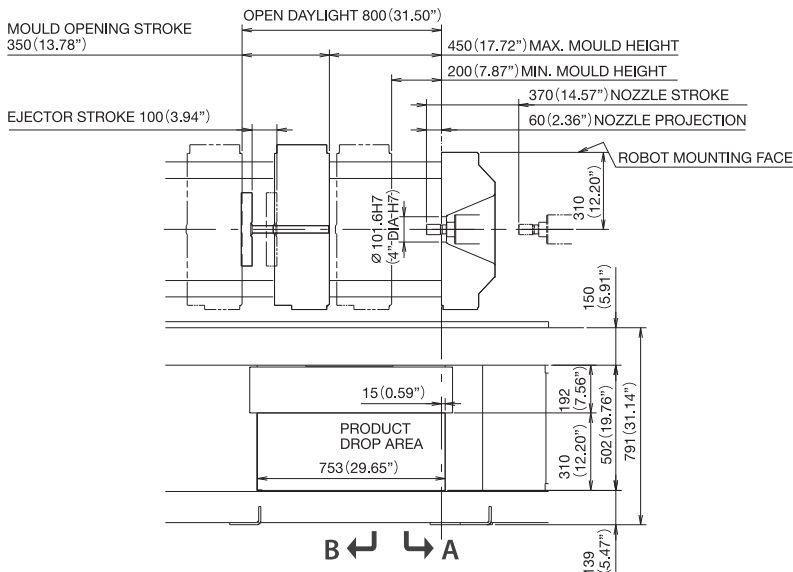
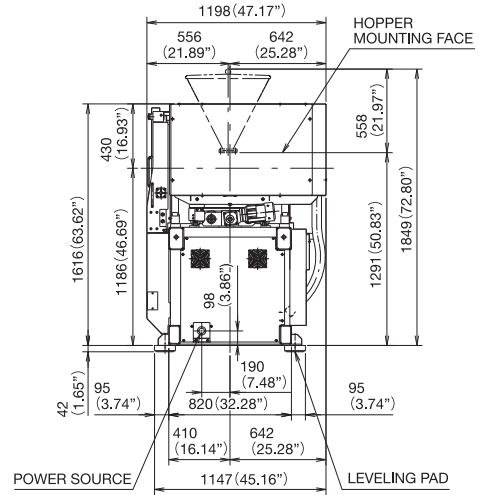
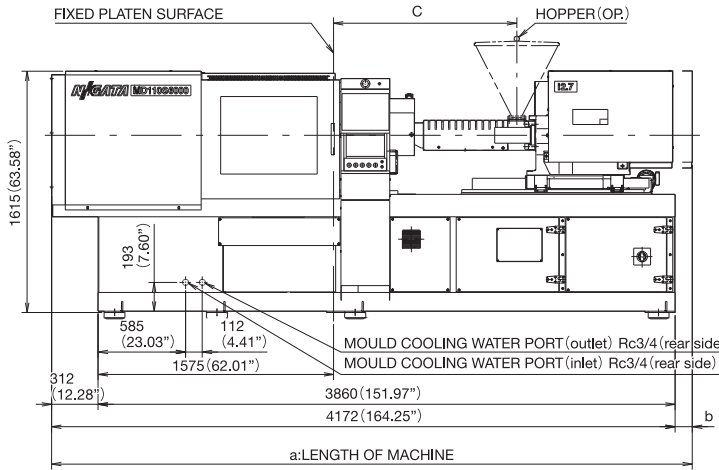
\*7:Shows the capacity of machine : When branching the power supply of auxiliary device from molding machine, increase the capacity by that value.

\*8:It is necessary to reflect the current derating (correcting) factor when multi conductor or so is used.

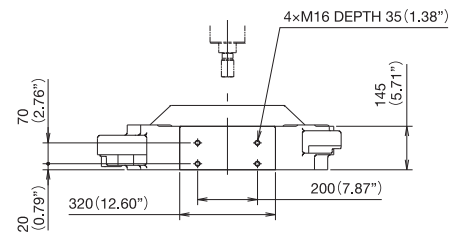
\*9:Used to cool the hopper base : Set the water pressure less than 0.5Mpa (72.5 psi) .

# External Dimension Diagram (MD110S6000)

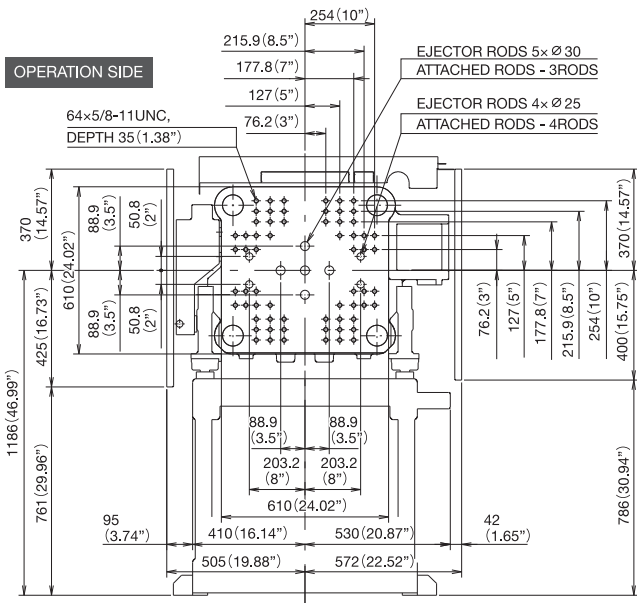
		Machine size table MODEL									
		mm (inch)									
INJ. Capacity	Type	Diameter	a	b	c	d	e	f	g	h	i
i2.7	Y	∅ 30 (1.18")	4172 (164.25")	0 (0")	1121 (44.13")	∅ 58 (2.28")	50 (1.97")	60 (2.36")	60 (2.36")	72 (2.84")	98 (3.86")
	A	∅ 35 (1.38")	4172 (164.25")	0 (0")	1226 (48.27")	∅ 65 (2.56")	50 (1.97")	60 (2.36")	60 (2.36")	72 (2.84")	98 (3.86")
	B	∅ 40 (1.57")	4288 (168.82")	116 (4.57")	1333 (52.48")	∅ 65 (2.56")	50 (1.97")	65 (2.56")	65 (2.56")	72 (2.84")	98 (3.86")



HOPPER MOUNTING DIMENSION DIAGRAM

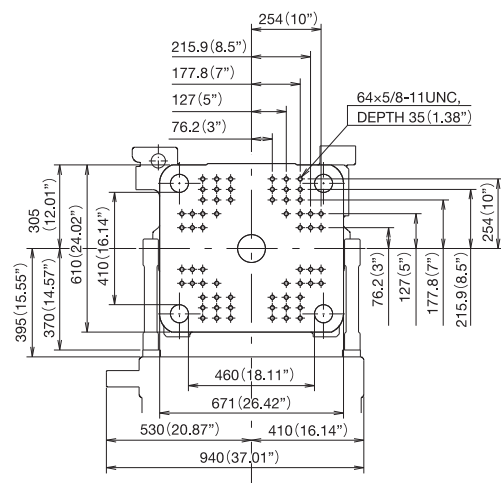


ROBOT MOUNTING HOLE



B MOVABLE PLATEN

MOULD MOUNTING DIMENSION DIAGRAM



A FIXED PLATEN